



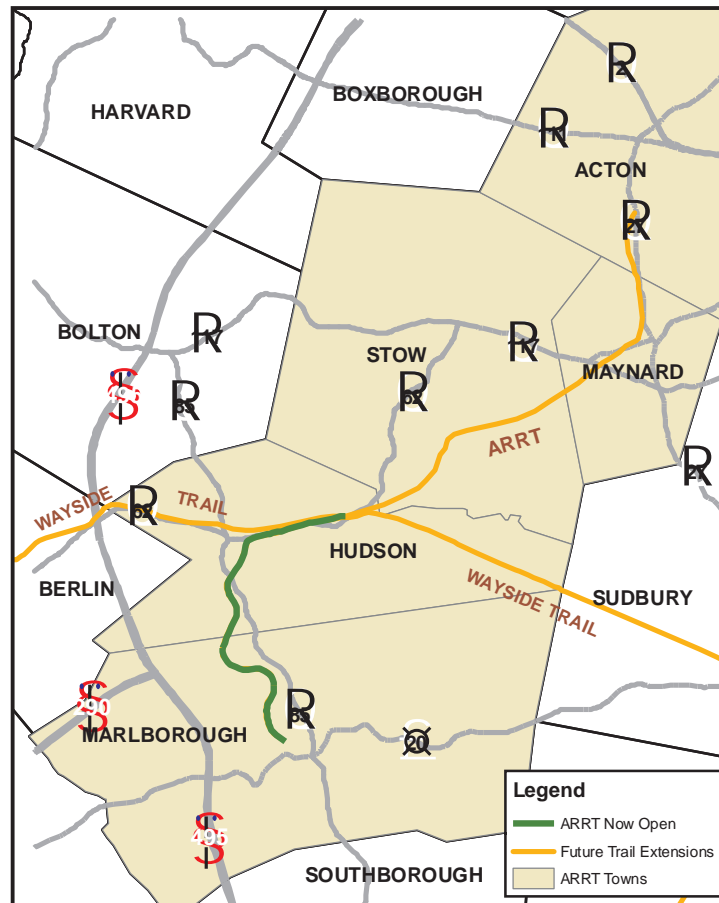
MARLBOROUGH ARRT



Assabet River Rail Trail

The ARRT is a multi use recreational trail which will pass through the communities of Marlborough, Hudson, Stow, Maynard, and Acton. The Marlborough and Hudson sections are open. To help support the continuation of the trail through Stow, Maynard, and Acton, we encourage you to go to www.arrrtinc.org.

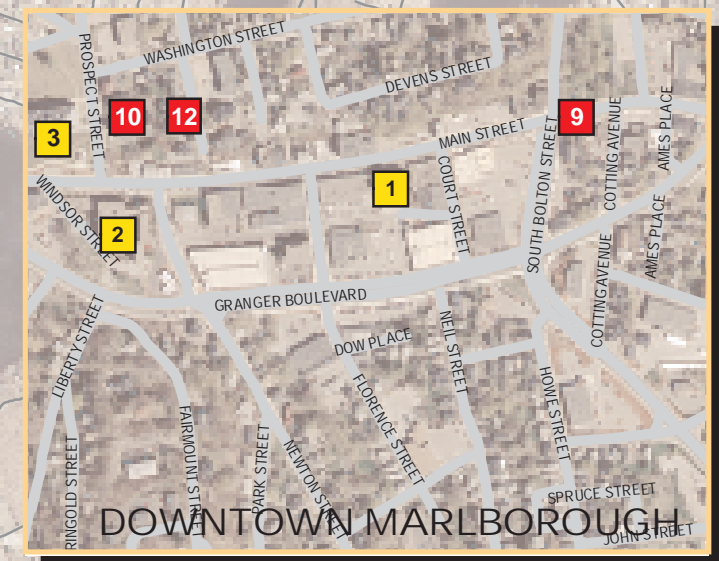
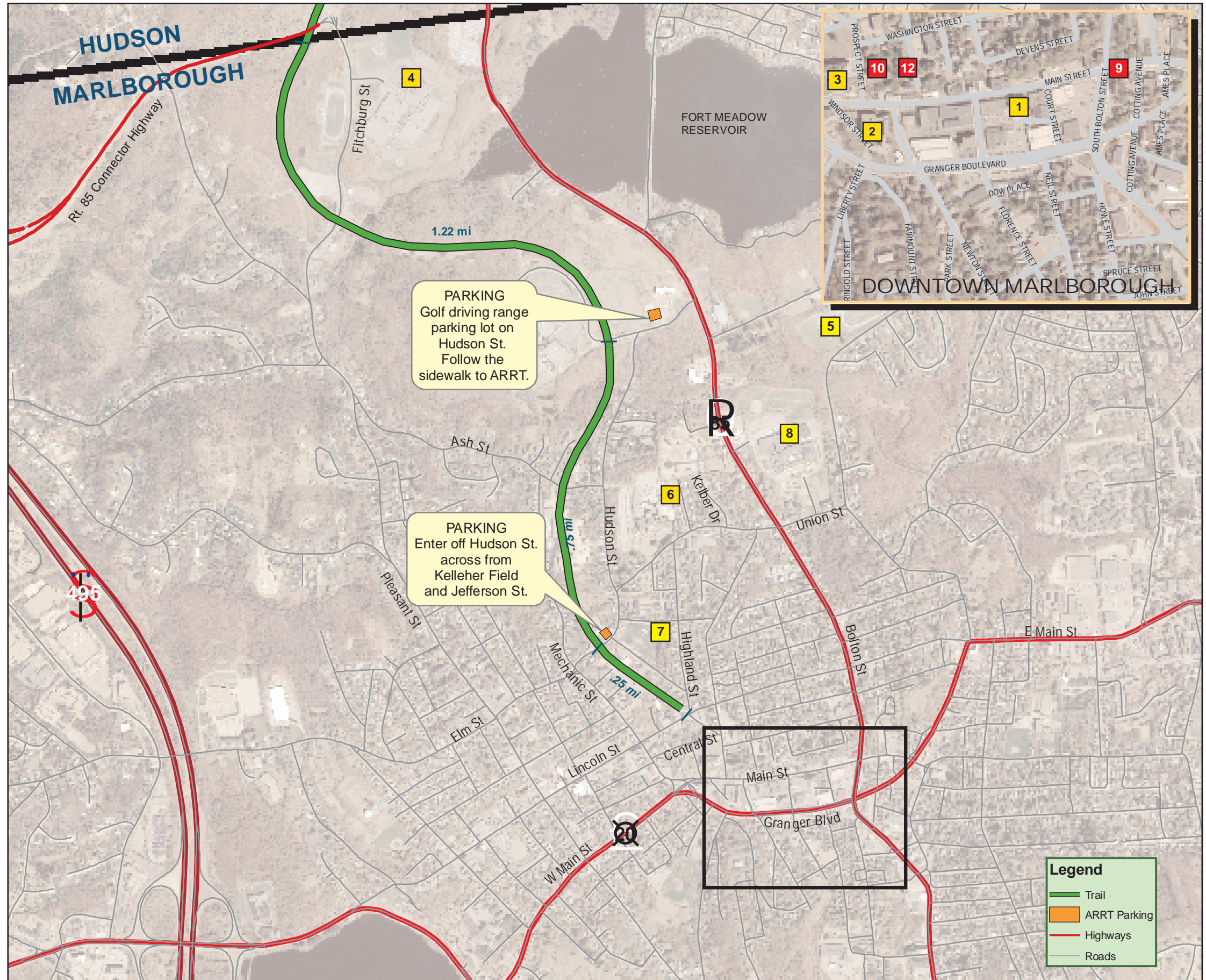
- 1** CITY HALL
- 2** SENIOR CENTER
- 3** WALKER BUILDING
- 4** ASSABET VALLEY VOCATIONAL SCHOOL
- 5** MARLBOROUGH HIGH SCHOOL
- 6** UMASS MEMORIAL MARLBOROUGH HOSPITAL
- 7** KELLEHER FIELD
- 8** MARLBOROUGH MIDDLE SCHOOL
- 9** JOSEPH J. CONNOLLY & DANIEL J. BURGER ATTORNEYS AT LAW
74 MAIN ST., MARLBOROUGH, (508) 485-4488
- 10** MARLBOROUGH COMMUNITY DEVELOPMENT CORP.
www.marlbroughcdc.org
- 11** PERSONAL PHYSICAL THERAPY (508) 481-5519
- 12** IMMACULATE CONCEPTION SCHOOL, Marlborough, MA



EARTH TECH IS A GLOBAL PROVIDER OF CONSULTING, ENGINEERING AND CONSTRUCTION SERVICES.

www.earthtech.com

www.arrrtinc.org
www.marlbrough-ma.gov



Legend

- Trail
- ARRT Parking
- Highways
- Roads



11 Florence Street
Marlborough, MA 01752



**WORKING TOGETHER
WORKS BETTER**



Personal Physical Therapy (508) 481-5519

