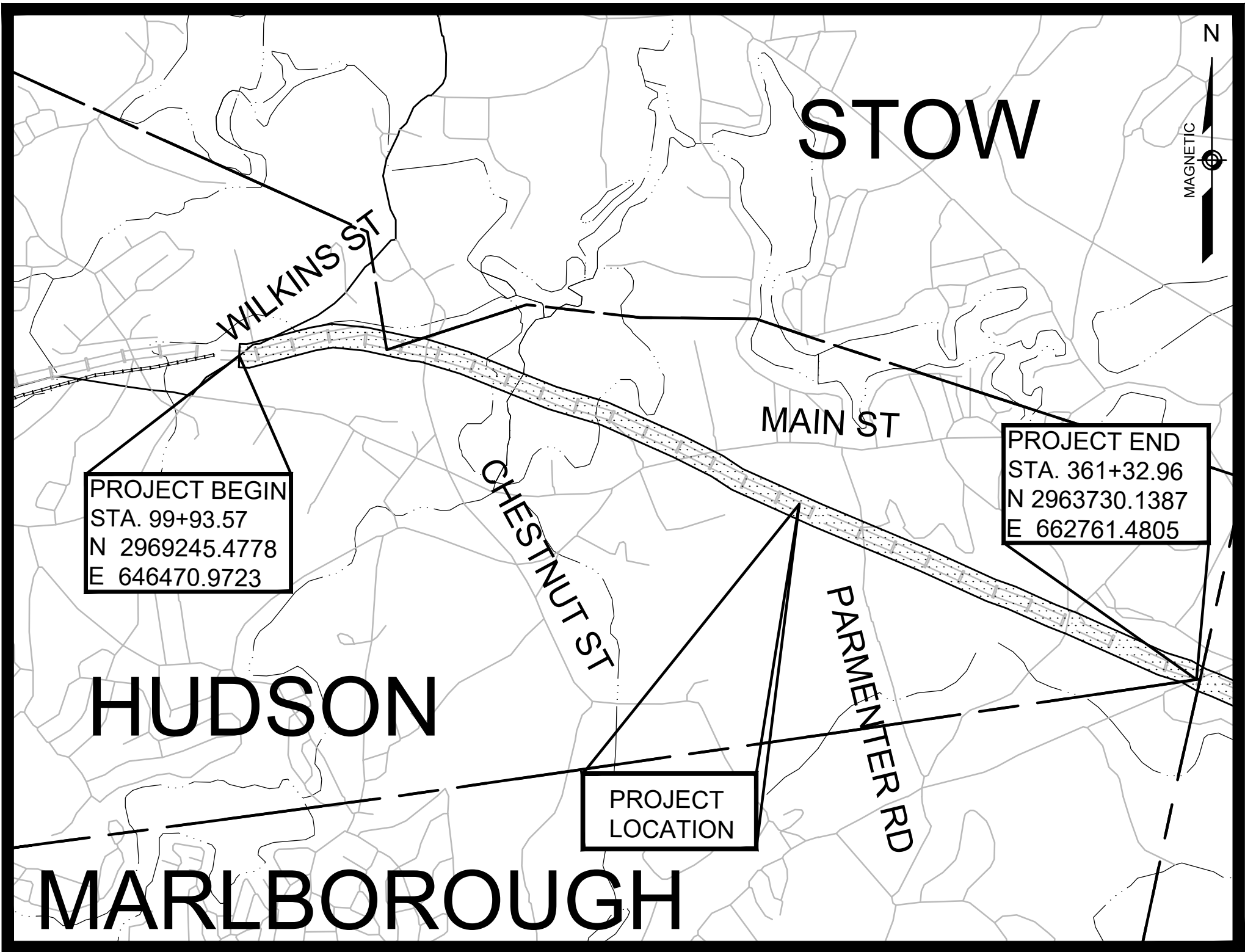


EVERSOURCE
SUDBURY-HUDSON
TRANSMISSION RELIABILITY PROJECT
HUDSON NOTICE OF INTENT PLANS

INDEX

SHEET NO.	DESCRIPTION
1	TITLE SHEET & INDEX
2	LEGEND & ABBREVIATIONS
3-4 3-6	KEY PLAN
7-9 7-13	SURVEY TIE-IN PLANS
14-23	TYPICAL SECTIONS
24-43 24-70	CONSTRUCTION PLANS
71-72 71-74	CONSTRUCTION BASELINE DATA
75-83, 95 75-95	PROFILE
96-97, 99-114, 118-121 96-121	TEMPORARY TRAFFIC CONTROL PLANS
122-133, 136-137 122-138	CONSTRUCTION DETAILS
139	WETLAND REPLICATION GRADING PLAN
140	WETLAND REPLICATION PLANTING PLAN
141-159 141-172	BRIDGE PLANS
173-237, 320 173-320	CROSS SECTIONS



REFERENCE MANUALS
THESE PLANS ARE SUPPLEMENTED BY THE OCTOBER 2017 CONSTRUCTION STANDARD DETAILS, THE 2015 OVERHEAD SIGNAL STRUCTURE AND FOUNDATION STANDARD DRAWINGS, MASSDOT TRAFFIC MANAGEMENT PLANS AND DETAIL DRAWINGS, THE 1990 STANDARD DRAWINGS FOR SIGNS AND SUPPORTS, THE 1968 STANDARD DRAWINGS FOR TRAFFIC SIGNALS AND HIGHWAY LIGHTING, AND THE LATEST EDITION OF THE AMERICAN STANDARD FOR NURSERY STOCK.

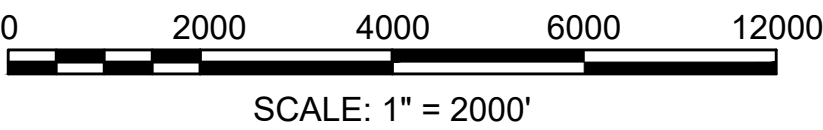
ENGINEER _____ DATE _____

ENGINEER _____ DATE _____
SHEETS 136-138, 141-159



VANASSE HANGEN BRUSTLIN, INC.
WATERTOWN, MASSACHUSETTS

ORIGINALLY SUBMITTED JANUARY 2, 2020
REVISED FEBRUARY 7, 2020
REVISED MARCH 13, 2020
REVISED APRIL 9, 2020
REVISED JULY 24, 2020



N O.	DESCRIPTION	BY	DATE	APPR.	
REVISION					
EVERSOURCE					
SUDBURY-HUDSON TRANSMISSION RELIABILITY PROJECT					
HUDSON, STOW, MARLBOROUGH & SUDBURY MASSACHUSETTS					
TITLE SHEET & INDEX					
PLAN 1 OF 320					
SCALE: unless noted 1"=2000'	DATE JULY 2020	DRAWN MS	CHECKED SK	APPROVED MS	DRAWING NO. REV. . .

A

B

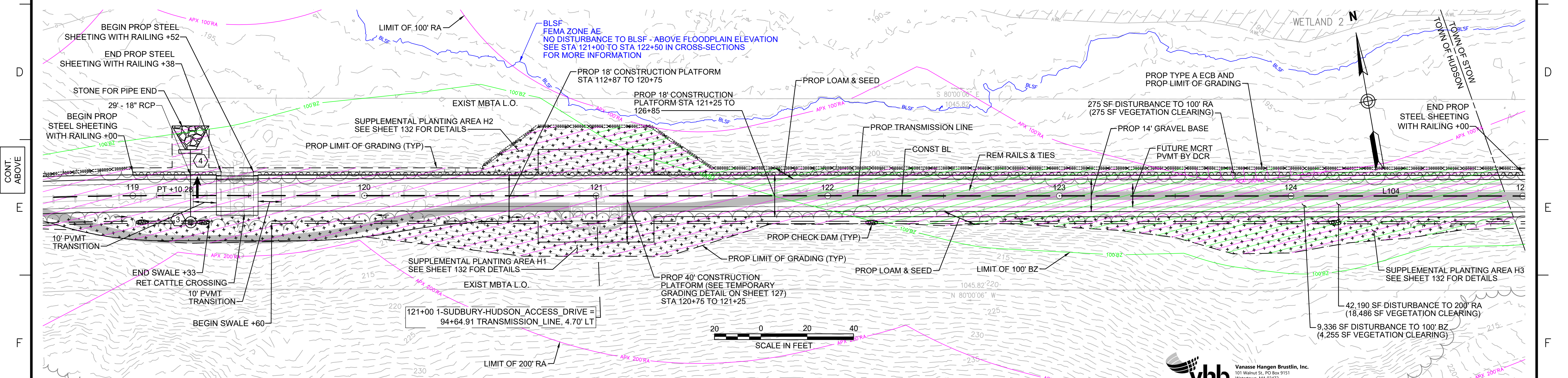
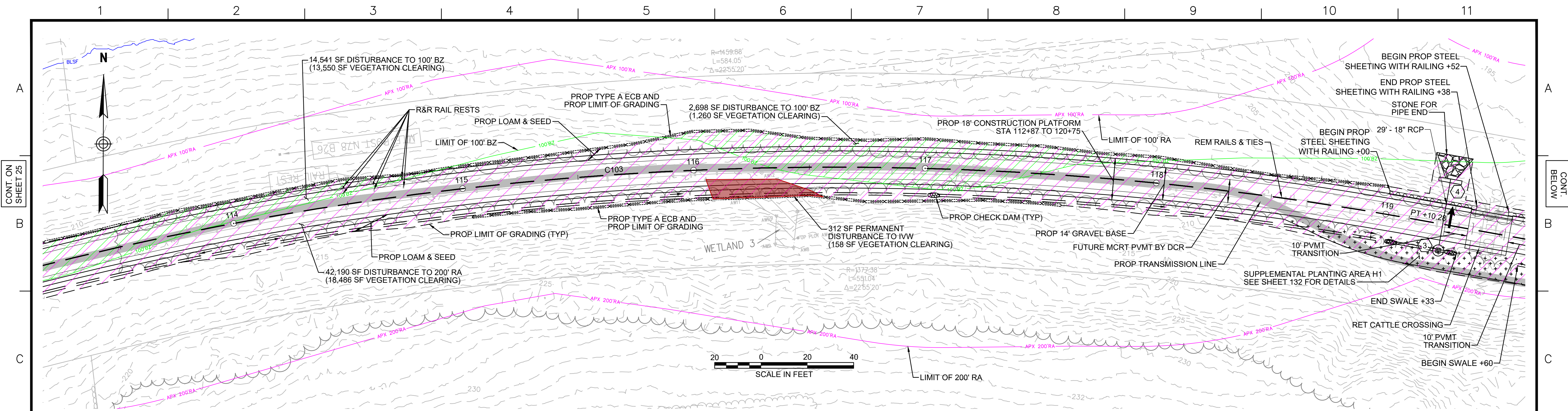
C

D

E

F

G



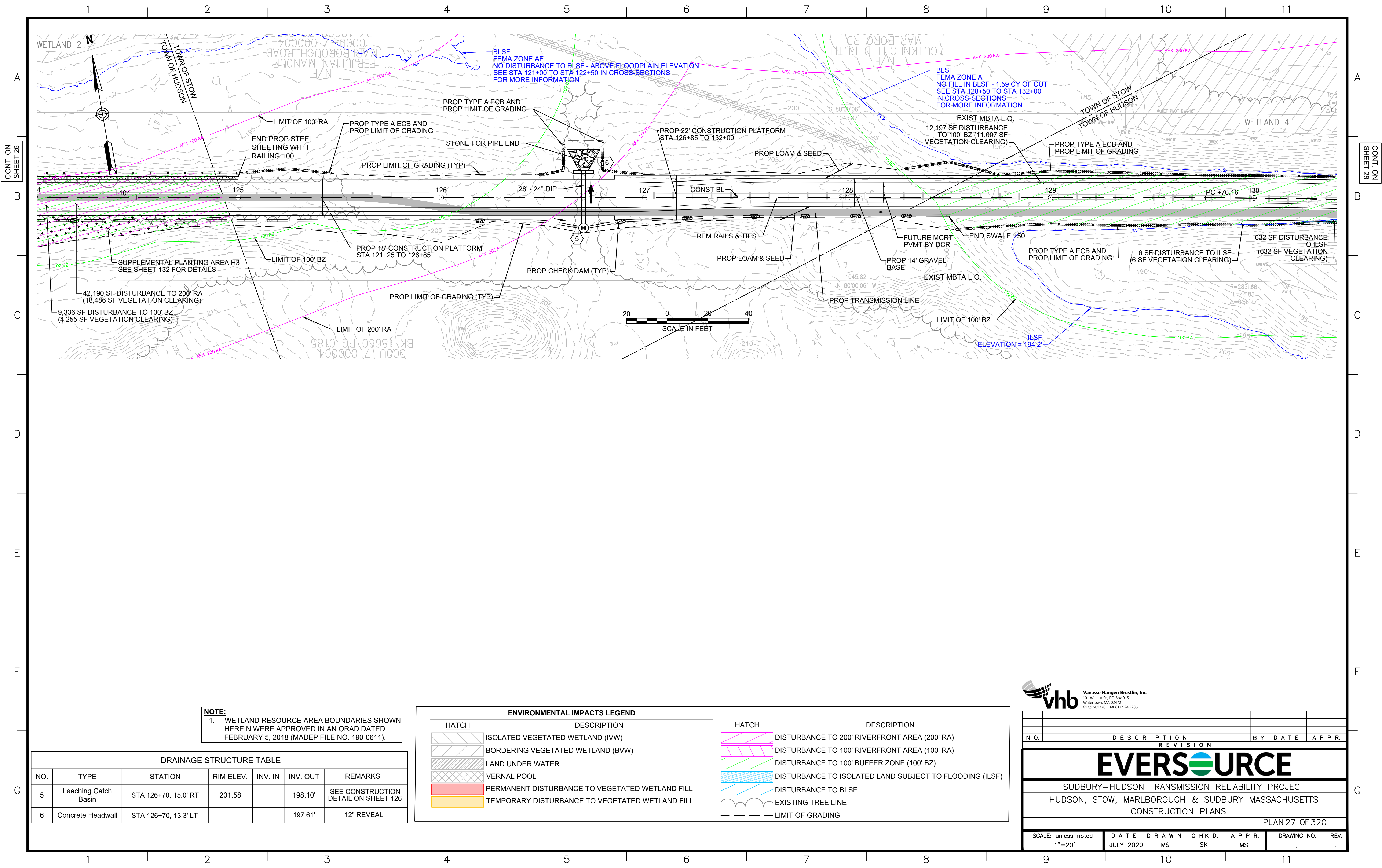
NOTE:
1. WETLAND RESOURCE AREA BOUNDARIES SHOWN HEREIN WERE APPROVED IN AN ORAD DATED FEBRUARY 5, 2018 (MADEP FILE NO. 190-0611).

ENVIRONMENTAL IMPACTS LEGEND	
HATCH	DESCRIPTION
	ISOLATED VEGETATED WETLAND (IVW)
	BORDERING VEGETATED WETLAND (BVW)
	LAND UNDER WATER
	VERNAL POOL
	PERMANENT DISTURBANCE TO VEGETATED WETLAND FILL
	TEMPORARY DISTURBANCE TO VEGETATED WETLAND FILL
HATCH	DESCRIPTION
	DISTURBANCE TO 200' RIVERFRONT AREA (200' RA)
	DISTURBANCE TO 100' RIVERFRONT AREA (100' RA)
	DISTURBANCE TO 100' BUFFER ZONE (100' BZ)
	DISTURBANCE TO ISOLATED LAND SUBJECT TO FLOODING (ILSF)
	DISTURBANCE TO BLSF
	EXISTING TREE LINE
	LIMIT OF GRADING

DRAINAGE STRUCTURE TABLE						
NO.	TYPE	STATION	RIM ELEV.	INV. IN	INV. OUT	REMARKS
3	Leaching Catch Basin	STA 119+25, 11.5' RT	207.24		199.17'	
4	Concrete Headwall	STA 119+25, 19.1' LT			197.91'	12" REVEAL

Vanasse Hangen Brustlin, Inc.
101 Walnut St., PO Box 9151
Watertown, MA 02472
617.254.1770 FAX 617.254.2286

N.O.	DESCRIPTION	REVISION	BY	DATE	APPR.
EVERSOURCE					
SUDBURY-HUDSON TRANSMISSION RELIABILITY PROJECT					
HUDSON, STOW, MARLBOROUGH & SUDBURY MASSACHUSETTS					
CONSTRUCTION PLANS					
PLAN 26 OF 320					
SCALE: unless noted 1"=20'		DATE	DRAWN	CHK'D	APPR.
		JULY 2020	MS	SK	MS
		DRAWING NO.	REV.		
		11			



NOTE:
1. WETLAND RESOURCE AREA BOUNDARIES SHOWN HEREIN WERE APPROVED IN AN ORAD DATED FEBRUARY 5, 2018 (MADEP FILE NO. 190-0611).

DRAINAGE STRUCTURE TABLE						
NO.	TYPE	STATION	RIM ELEV.	INV. IN	INV. OUT	REMARKS
5	Leaching Catch Basin	STA 126+70, 15.0' RT	201.58		198.10'	SEE CONSTRUCTION DETAIL ON SHEET 126
6	Concrete Headwall	STA 126+70, 13.3' LT			197.61'	12" REVEAL

ENVIRONMENTAL IMPACTS LEGEND	
HATCH	DESCRIPTION
	ISOLATED VEGETATED WETLAND (IVW)
	BORDERING VEGETATED WETLAND (BVW)
	LAND UNDER WATER
	VERNAL POOL
	PERMANENT DISTURBANCE TO VEGETATED WETLAND FILL
	TEMPORARY DISTURBANCE TO VEGETATED WETLAND FILL
HATCH	DESCRIPTION
	DISTURBANCE TO 200' RIVERFRONT AREA (200' RA)
	DISTURBANCE TO 100' RIVERFRONT AREA (100' RA)
	DISTURBANCE TO 100' BUFFER ZONE (100' BZ)
	DISTURBANCE TO ISOLATED LAND SUBJECT TO FLOODING (ILSF)
	DISTURBANCE TO BLSF
	EXISTING TREE LINE
	LIMIT OF GRADING

Vannasse Hangen Brustlin, Inc.
101 Walnut St., PO Box 9151
Watertown, MA 02472
617.254.1770 FAX 617.254.2286

N.O.	DESCRIPTION	BY	DATE	APPR.
REVISION				

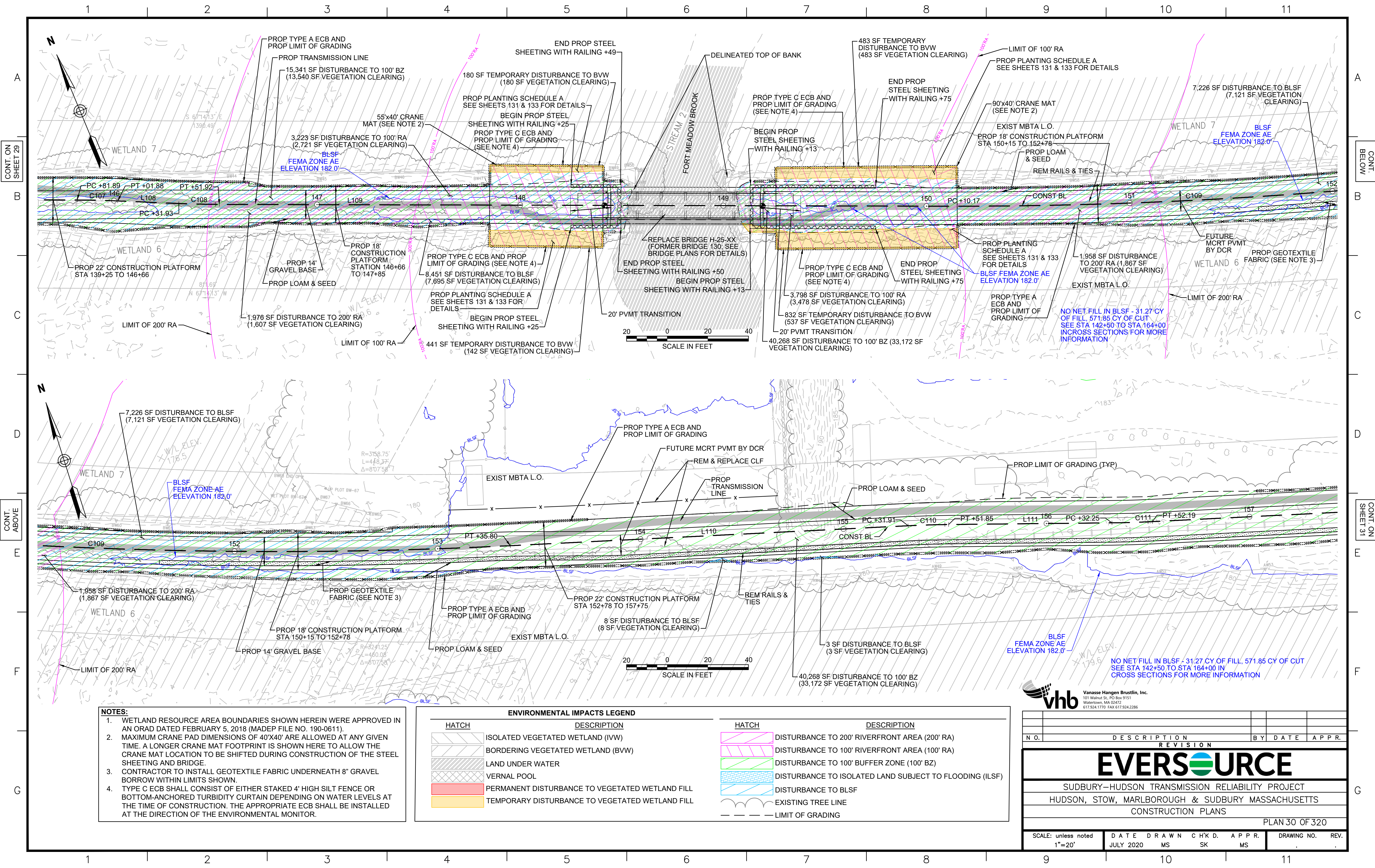
EVERSOURCE

SUDBURY-HUDSON TRANSMISSION RELIABILITY PROJECT
HUDSON, STOW, MARLBOROUGH & SUDBURY MASSACHUSETTS
CONSTRUCTION PLANS
PLAN 27 OF 320

SCALE: unless noted 1"=20'	DATE JULY 2020	DRAWN MS	CH'K'D. SK	APPR. MS	DRAWING NO.	REV.

CONT. ON
SHEET 28

CONT. ON
SHEET 28



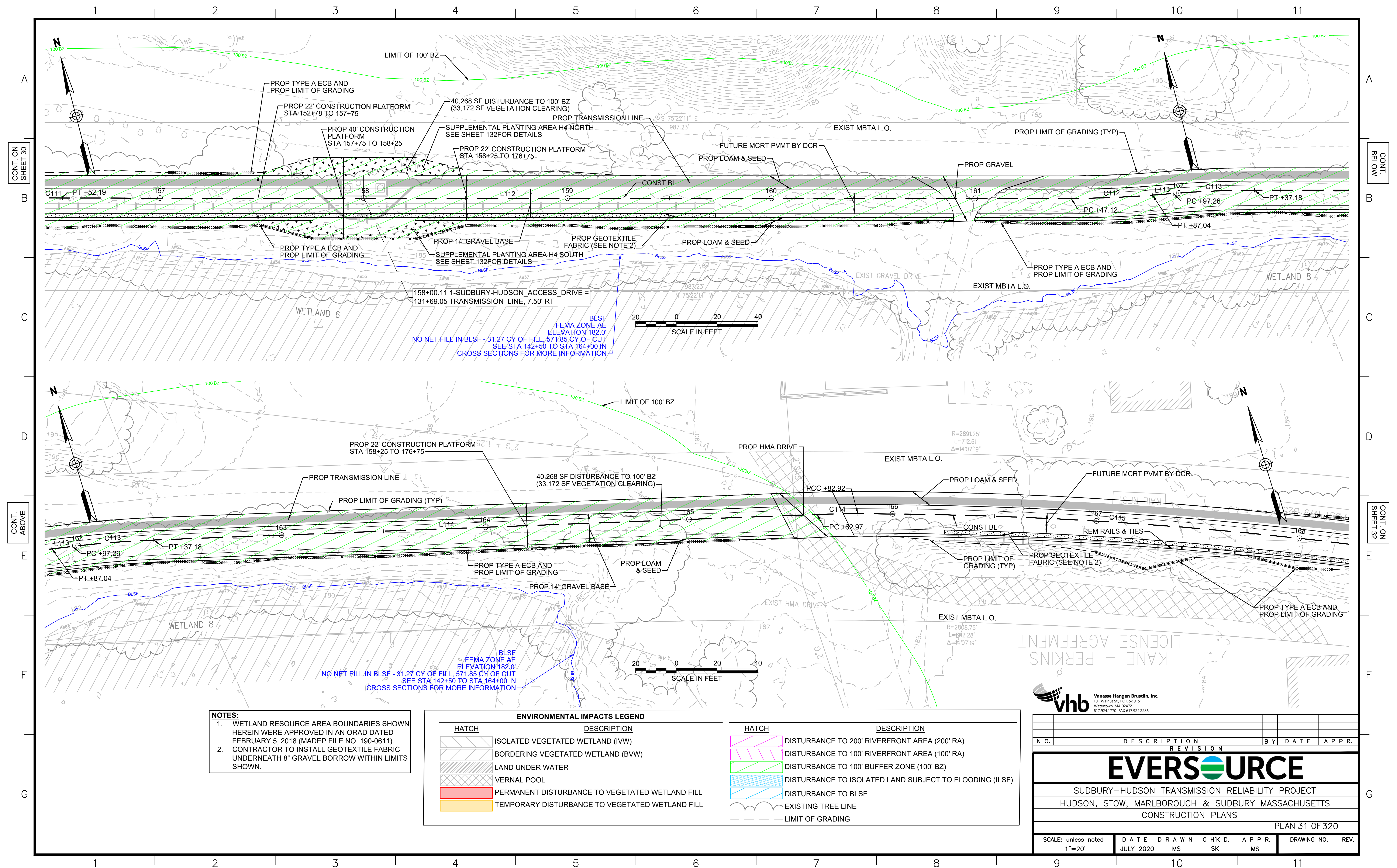
- NOTES:**
1. WETLAND RESOURCE AREA BOUNDARIES SHOWN HEREIN WERE APPROVED IN AN ORAD DATED FEBRUARY 5, 2018 (MADEP FILE NO. 190-0611).
 2. MAXIMUM CRANE PAD DIMENSIONS OF 40'X40' ARE ALLOWED AT ANY GIVEN TIME. A LONGER CRANE MAT FOOTPRINT IS SHOWN HERE TO ALLOW THE CRANE MAT LOCATION TO BE SHIFTED DURING CONSTRUCTION OF THE STEEL SHEETING AND BRIDGE.
 3. CONTRACTOR TO INSTALL GEOTEXTILE FABRIC UNDERNEATH 8" GRAVEL BORROW WITHIN LIMITS SHOWN.
 4. TYPE C ECB SHALL CONSIST OF EITHER STAKED 4' HIGH SILT FENCE OR BOTTOM-ANCHORED TURBIDITY CURTAIN DEPENDING ON WATER LEVELS AT THE TIME OF CONSTRUCTION. THE APPROPRIATE ECB SHALL BE INSTALLED AT THE DIRECTION OF THE ENVIRONMENTAL MONITOR.

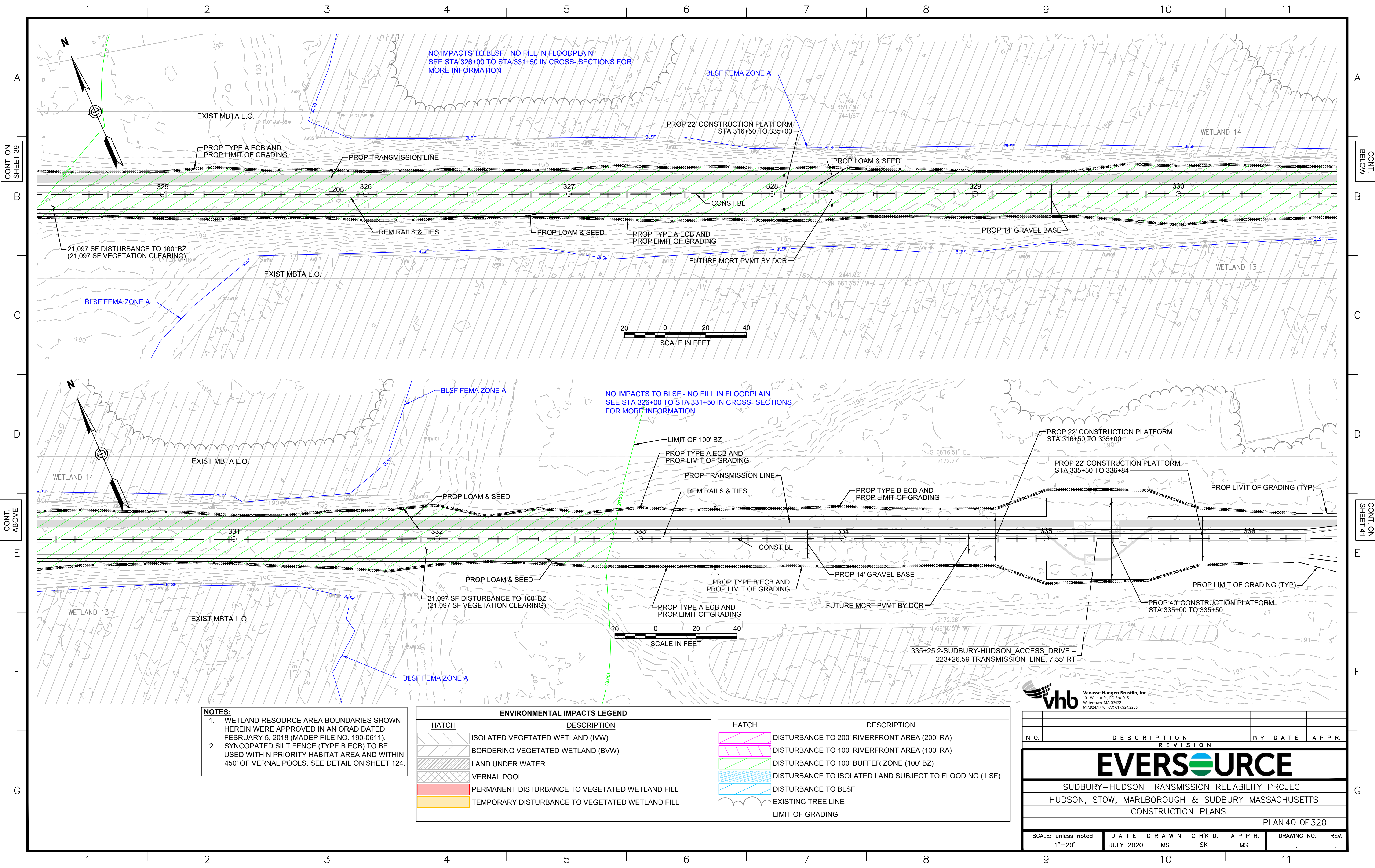
ENVIRONMENTAL IMPACTS LEGEND	
HATCH	DESCRIPTION
	ISOLATED VEGETATED WETLAND (IVW)
	BORDERING VEGETATED WETLAND (BVW)
	LAND UNDER WATER
	VERNAL POOL
	PERMANENT DISTURBANCE TO VEGETATED WETLAND FILL
	TEMPORARY DISTURBANCE TO VEGETATED WETLAND FILL
	DISTURBANCE TO 200' RIVERFRONT AREA (200' RA)
	DISTURBANCE TO 100' RIVERFRONT AREA (100' RA)
	DISTURBANCE TO 100' BUFFER ZONE (100' BZ)
	DISTURBANCE TO ISOLATED LAND SUBJECT TO FLOODING (ILSF)
	DISTURBANCE TO BLSF
	EXISTING TREE LINE
	LIMIT OF GRADING

Vannasse Hangen Brustlin, Inc.
101 Walnut St., PO Box 9151
Watertown, MA 02472
617.254.1770 FAX 617.254.2296

N.O.	DESCRIPTION	BY	DATE	APPR.
REVISION				
EVERSOURCE				
SUDBURY-HUDSON TRANSMISSION RELIABILITY PROJECT				
HUDSON, STOW, MARLBOROUGH & SUDBURY MASSACHUSETTS				
CONSTRUCTION PLANS				
PLAN 30 OF 320				
SCALE: unless noted 1"=20'	DATE JULY 2020	DRAWN MS	CHK'D SK	APPR. MS
DRAWING NO.	REV.			

CONT. ON SHEET 29
CONT. BELOW
CONT. ABOVE
CONT. ON SHEET 31
G





- NOTES:**
1. WETLAND RESOURCE AREA BOUNDARIES SHOWN HEREIN WERE APPROVED IN AN ORAD DATED FEBRUARY 5, 2018 (MADEP FILE NO. 190-0611).
 2. SYNCOPATED SILT FENCE (TYPE B ECB) TO BE USED WITHIN PRIORITY HABITAT AREA AND WITHIN 450' OF VERNAL POOLS. SEE DETAIL ON SHEET 124.

ENVIRONMENTAL IMPACTS LEGEND	
HATCH	DESCRIPTION
	ISOLATED VEGETATED WETLAND (IVW)
	BORDERING VEGETATED WETLAND (BVW)
	LAND UNDER WATER
	VERNAL POOL
	PERMANENT DISTURBANCE TO VEGETATED WETLAND FILL
	TEMPORARY DISTURBANCE TO VEGETATED WETLAND FILL
	DISTURBANCE TO 200' RIVERFRONT AREA (200' RA)
	DISTURBANCE TO 100' RIVERFRONT AREA (100' RA)
	DISTURBANCE TO 100' BUFFER ZONE (100' BZ)
	DISTURBANCE TO ISOLATED LAND SUBJECT TO FLOODING (ILSF)
	DISTURBANCE TO BLSF
	EXISTING TREE LINE
	LIMIT OF GRADING

Vanasse Hangen Brustlin, Inc.
101 Walnut St., PO Box 9151
Watertown, MA 02472
617.924.1770 FAX 617.924.2286

N.O.	DESCRIPTION	BY	DATE	APPR.
REVISION				
EVERSOURCE				
SUDBURY-HUDSON TRANSMISSION RELIABILITY PROJECT				
HUDSON, STOW, MARLBOROUGH & SUDBURY MASSACHUSETTS				
CONSTRUCTION PLANS				
PLAN 40 OF 320				
SCALE: unless noted 1"=20'	DATE JULY 2020	DRAWN MS	CH'K'D. SK	APPR. MS
DRAWING NO.	REV.			

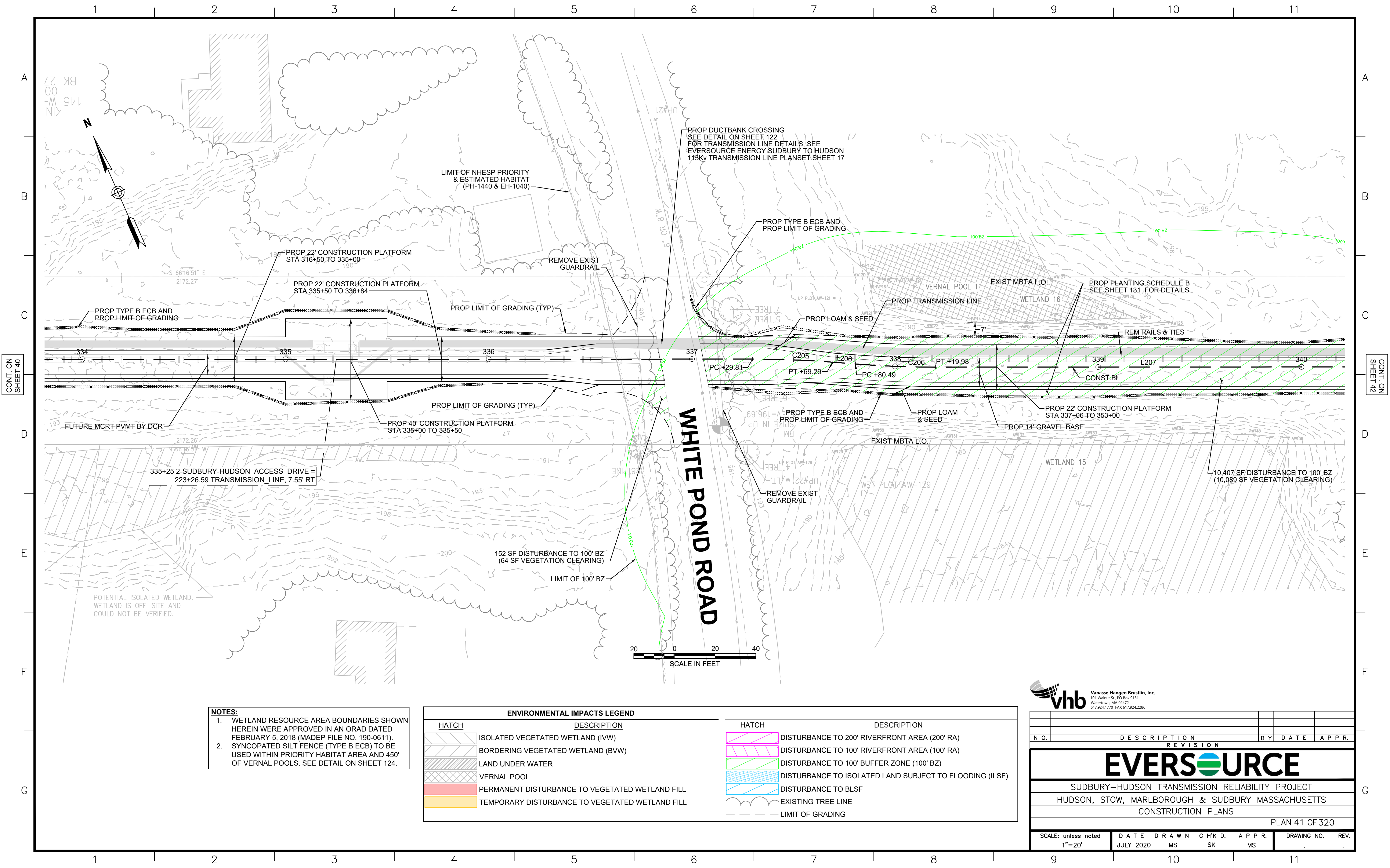
CONT. ON
SHEET 39

CONT.
BELOW

CONT. ABOVE

CONT. ON
SHEET 41

G



NOTES:
1. WETLAND RESOURCE AREA BOUNDARIES SHOWN HEREIN WERE APPROVED IN AN ORAD DATED FEBRUARY 5, 2018 (MADEP FILE NO. 190-0611).
2. SYNCOPATED SILT FENCE (TYPE B ECB) TO BE USED WITHIN PRIORITY HABITAT AREA AND 450' OF VERNAL POOLS. SEE DETAIL ON SHEET 124.

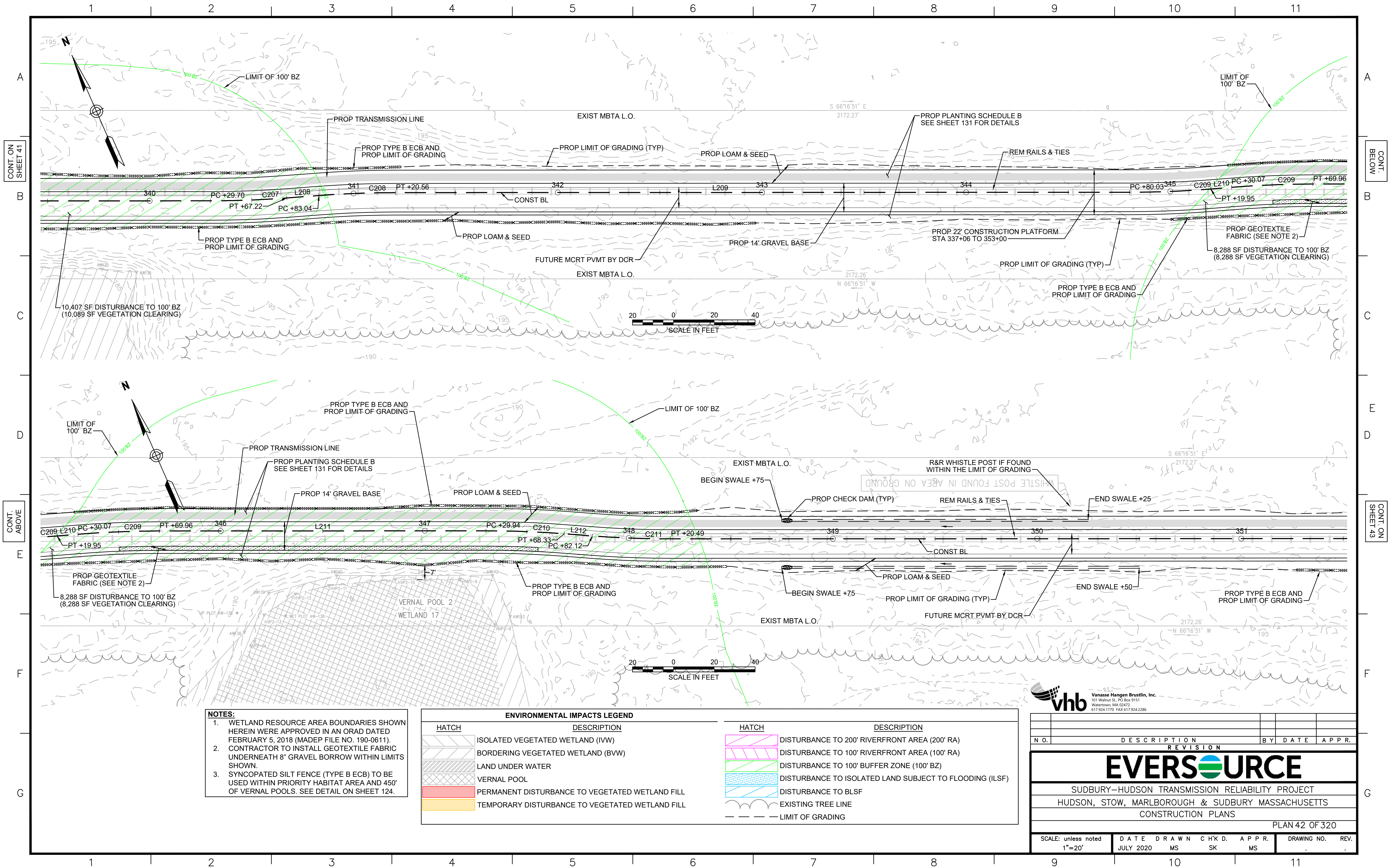
ENVIRONMENTAL IMPACTS LEGEND	
HATCH	DESCRIPTION
	ISOLATED VEGETATED WETLAND (IVW)
	BORDERING VEGETATED WETLAND (BVW)
	LAND UNDER WATER
	VERNAL POOL
	PERMANENT DISTURBANCE TO VEGETATED WETLAND FILL
	TEMPORARY DISTURBANCE TO VEGETATED WETLAND FILL
	DISTURBANCE TO 200' RIVERFRONT AREA (200' RA)
	DISTURBANCE TO 100' RIVERFRONT AREA (100' RA)
	DISTURBANCE TO 100' BUFFER ZONE (100' BZ)
	DISTURBANCE TO ISOLATED LAND SUBJECT TO FLOODING (ILSF)
	DISTURBANCE TO BLSF
	EXISTING TREE LINE
	LIMIT OF GRADING

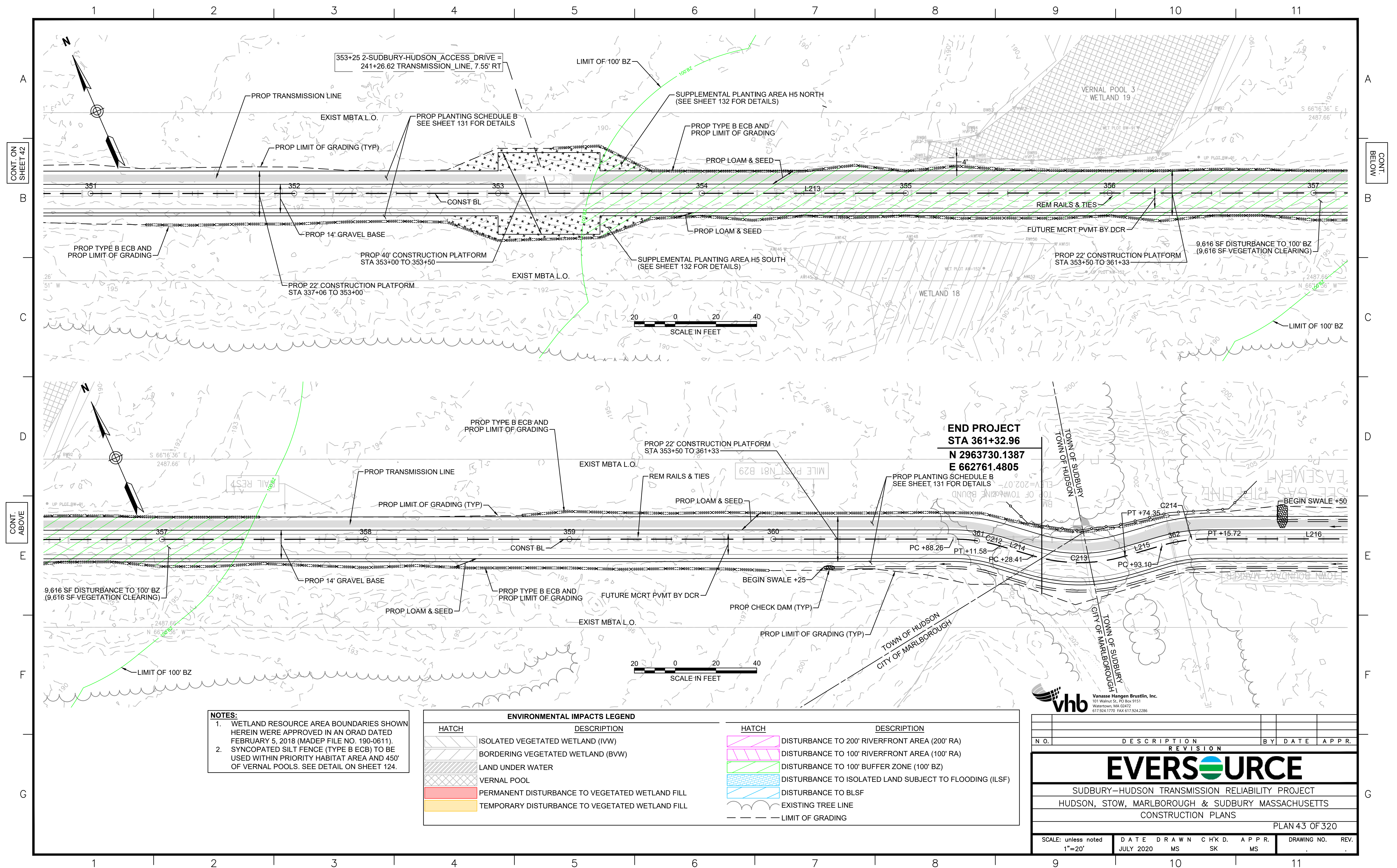
Vanasse Hangen Brustlin, Inc.
101 Walnut St., PO Box 9151
Watertown, MA 02472
617.924.1770 FAX 617.924.2286

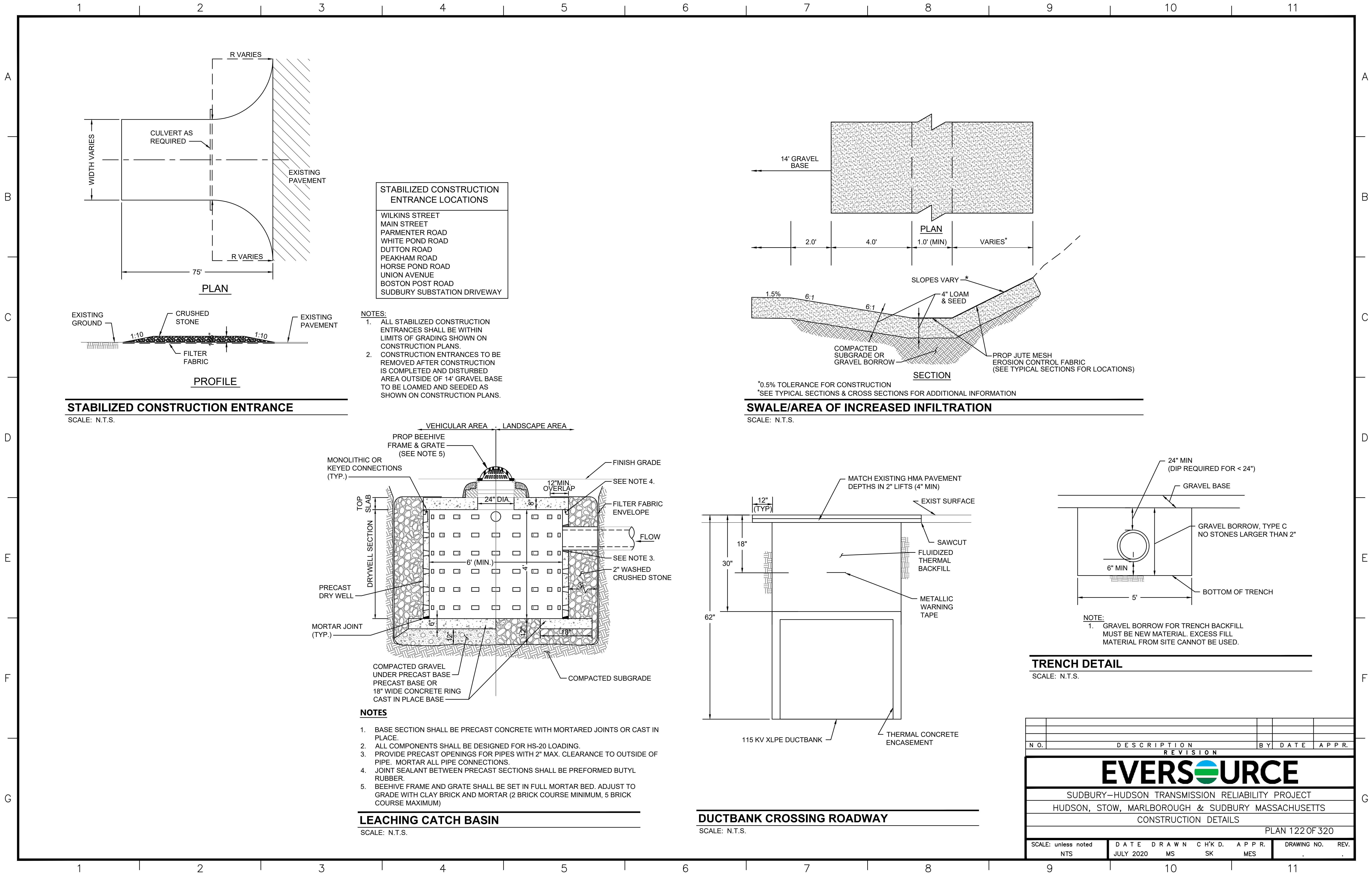
N.O.	DESCRIPTION	BY	DATE	APPR.
REVISION				
EVERSOURCE				
SUDBURY-HUDSON TRANSMISSION RELIABILITY PROJECT				
HUDSON, STOW, MARLBOROUGH & SUDBURY MASSACHUSETTS				
CONSTRUCTION PLANS				
PLAN 41 OF 320				
SCALE: unless noted 1"=20'	DATE JULY 2020	DRAWN MS	CHK'D. SK	APPR. MS
DRAWING NO.	REV.			

CONT. ON
SHEET 40

CONT. ON
SHEET 42







STABILIZED CONSTRUCTION ENTRANCE LOCATIONS
WILKINS STREET
MAIN STREET
PARMENTER ROAD
WHITE POND ROAD
DUTTON ROAD
PEAKHAM ROAD
HORSE POND ROAD
UNION AVENUE
BOSTON POST ROAD
SUDBURY SUBSTATION DRIVEWAY

- NOTES:
1. ALL STABILIZED CONSTRUCTION ENTRANCES SHALL BE WITHIN LIMITS OF GRADING SHOWN ON CONSTRUCTION PLANS.
 2. CONSTRUCTION ENTRANCES TO BE REMOVED AFTER CONSTRUCTION IS COMPLETED AND DISTURBED AREA OUTSIDE OF 14' GRAVEL BASE TO BE LOAMED AND SEEDED AS SHOWN ON CONSTRUCTION PLANS.

*0.5% TOLERANCE FOR CONSTRUCTION
*SEE TYPICAL SECTIONS & CROSS SECTIONS FOR ADDITIONAL INFORMATION

- NOTE:
1. GRAVEL BORROW FOR TRENCH BACKFILL MUST BE NEW MATERIAL. EXCESS FILL MATERIAL FROM SITE CANNOT BE USED.

TRENCH DETAIL

SCALE: N.T.S.

N O.	DESCRIPTION	BY	DATE	A P P R.	
REVISION					
EVERSOURCE					
SUDBURY-HUDSON TRANSMISSION RELIABILITY PROJECT					
HUDSON, STOW, MARLBOROUGH & SUDBURY MASSACHUSETTS					
CONSTRUCTION DETAILS					
PLAN 122 OF 320					
SCALE: unless noted NTS	DATE JULY 2020	DRAWN MS	CHK'D SK	A P P R. MES	DRAWING NO. REV.

PLANTING SCHEDULE C: SUPPLEMENTAL PLANTING AREAS

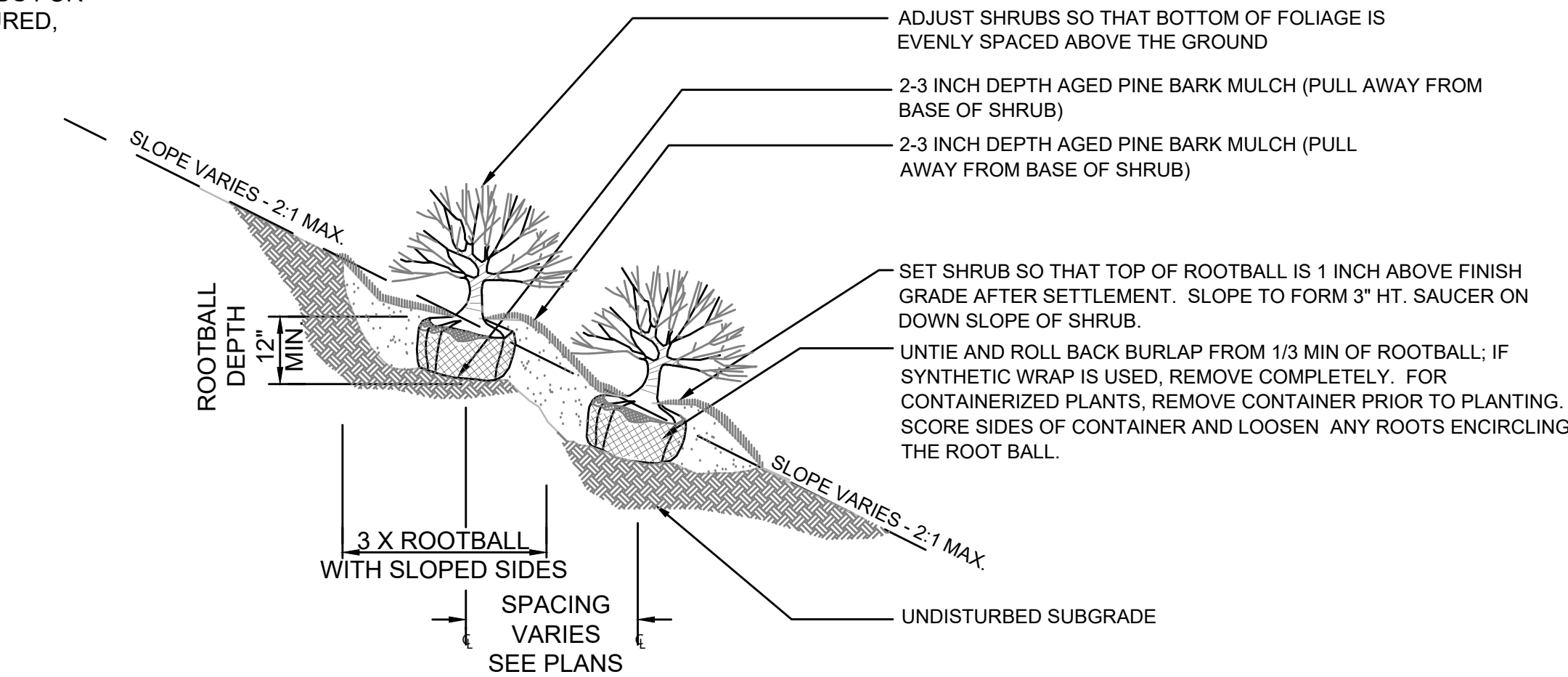
SUPPLEMENTAL PLANTINGS										
SPECIES	WETLAND STATUS	SPACING	PLANT SIZE	QUANTITY						
				H1	H2	H3	H4 NORTH	H4 SOUTH	H5 NORTH	H5 SOUTH
SUMMERSWEET CLETHRA (<i>CLETHRA ALNIFOLIA</i>)	FAC	48" O.C.	2' - 3'	58	26	30	12	9	14	15
ALTERNATE-LEAVED DOGWOOD (<i>SWIDA ALTERNIFOLIA</i>)	FACU	48" O.C.	24" - 30"	58	26	30	12	9	14	15
NORTHERN BAYBERRY (<i>MYRICA PENSYLVANICA</i>)	FAC	48" O.C.	2' - 3'	58	26	30	12	9	14	15
AMERICAN HAZELNUT (<i>CORYLUS AMERICANA</i>)	FACU	48" O.C.	2' - 3'	58	26	30	12	9	14	15

PLANTING NOTES:

- ADD SHRUB SEED MIX TO HERBACEOUS SEED MIX.
- ANY PROPOSED PLANT SUBSTITUTIONS MUST BE REVIEWED BY LANDSCAPE ARCHITECT AND APPROVED IN WRITING BY THE ENVIRONMENTAL MONITOR.
- ONLY SPECIES ARE ALLOWED (NO HORTICULTURAL CULTIVARS OR VARIETIES).
- SEED MIX AND PLANT STOCK SHALL BE OBTAINED FROM A NURSERY THAT SPECIALIZES IN NATIVE ECOLOGICAL PLANTINGS. PLANT STOCK SHALL BE SUPPLIED IN A PLANTING-READY CONDITION. ALL MATERIALS MUST BE INSPECTED AND APPROVED BY THE ENVIRONMENTAL MONITOR PRIOR TO BEING PLANTED. IF NOT PLANTED WITHIN 12 HOURS FROM WHEN THEY WERE COLLECTED, PLANTS SHALL BE STORED IN ACCORDANCE WITH RECOMMENDATIONS PROVIDED BY THE NURSERY.
- PLANT STOCK WILL BE INSTALLED IN HAND-DUG HOLES IN LOCATIONS TO BE DETERMINED BY ENVIRONMENTAL MONITOR.
- A 3-INCH DEEP MULCH PER SPECIFICATION SHALL BE INSTALLED UNDER ALL TREES AND SHRUBS, AND IN ALL PLANTINGS BEDS, UNLESS OTHERWISE INDICATED ON THE PLANS, OR AS DIRECTED BY THE ENVIRONMENTAL MONITOR.
- NO FERTILIZERS SHALL BE APPLIED.
- NO PLANT MATERIALS SHALL BE INSTALLED UNTIL ALL GRADING AND CONSTRUCTION HAS BEEN COMPLETED IN THE IMMEDIATE AREA. CONTRACTOR SHALL NOTIFY OWNER'S REPRESENTATIVE OF ANY CONFLICT.
- ALL PLANT MATERIALS INSTALLED SHALL MEET THE SPECIFICATIONS OF THE "AMERICAN STANDARDS FOR NURSERY STOCK" BY THE AMERICAN ASSOCIATION OF NURSERYMEN AND CONTRACT DOCUMENTS.
- ALL PLANT MATERIALS SHALL BE GUARANTEED FOR ONE YEAR FOLLOWING DATE OF FINAL ACCEPTANCE.

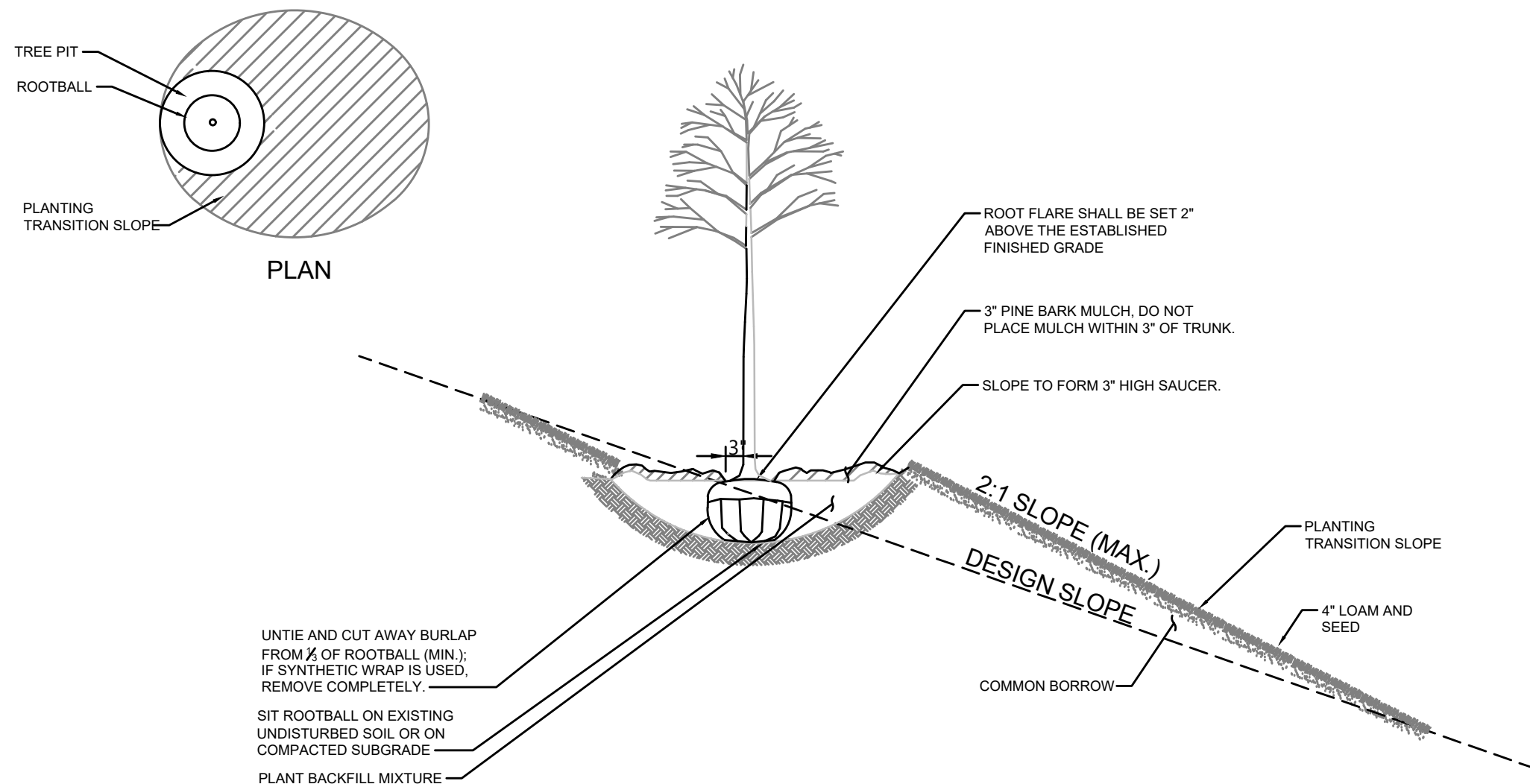
PLANT MAINTENANCE NOTES:

- CONTRACTOR SHALL PROVIDE COMPLETE MAINTENANCE OF SEEDED AREAS AND PLANTINGS. NO IRRIGATION IS PROPOSED FOR THIS SITE. THE CONTRACTOR SHALL SUPPLY SUPPLEMENTAL WATERING FOR SEEDED AREAS AND PLANTINGS DURING THE ONE YEAR PLANT GUARANTEE PERIOD.
- CONTRACTOR SHALL PROVIDE ALL MATERIALS, LABOR, AND EQUIPMENT FOR THE COMPLETE LANDSCAPE MAINTENANCE WORK. WATER SHALL BE PROVIDED BY THE CONTRACTOR.
- WATERING SHALL BE REQUIRED DURING THE GROWING SEASON, WHEN NATURAL RAINFALL IS BELOW ONE INCH PER WEEK.
- WATER SHALL BE APPLIED IN SUFFICIENT QUANTITY TO THOROUGHLY SATURATE THE SOIL IN THE ROOT ZONE OF EACH PLANT.
- PROTECT PLANTING AREAS AND PLANTS AGAINST TRESPASSING AND DAMAGE OF ALL KINDS FOR THE DURATION OF THE MAINTENANCE PERIOD. IF ANY PLANTS BECOME DAMAGED OR INJURED, THEY SHALL BE TREATED OR REPLACED AS REQUIRED.
- CONTRACTOR SHALL REPLACE DEAD OR DYING PLANTS AT THE END OF THE ONE YEAR GUARANTEE PERIOD. CONTRACTOR SHALL TURN OVER MAINTENANCE TO THE FACILITY MAINTENANCE STAFF AT THAT TIME.



SHRUB PLANTING ON SLOPE

SCALE: N.T.S.



TREE PLANTING ON SLOPE

SCALE: N.T.S.

N O.	DESCRIPTION	BY	DATE	A P P R.	
REVISION					
EVERSOURCE					
SUDBURY-HUDSON TRANSMISSION RELIABILITY PROJECT					
HUDSON, STOW, MARLBOROUGH & SUDBURY MASSACHUSETTS					
CONSTRUCTION DETAILS					
PLAN 132 OF 320					
SCALE: unless noted NTS	DATE JULY 2020	DRAWN MS	CH'K D. SK	A P P R. MES	DRAWING NO. REV. . .

