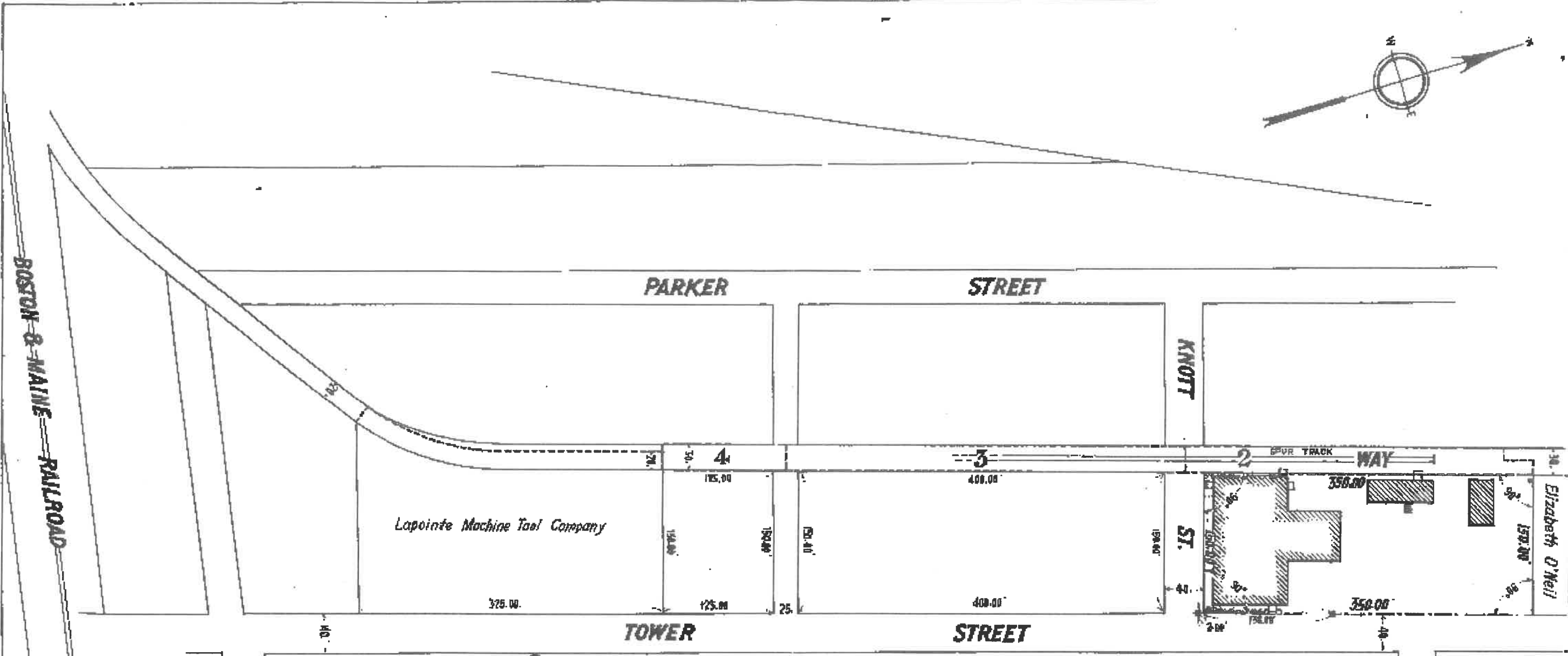
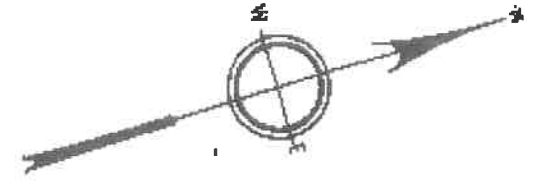


21005 141 77

2121098 Book 141 Page 77



BOSTON & MAINE RAILROAD

PARKER STREET

STREET

KNOTT

SPUR TRACK WAY

Lapointe Machine Tool Company

Elizabeth O'Neill

TOWER STREET

STREET

PLAN OF LAND IN HUDSON

Scale 60 feet to an inch

JUNE 1925.

G. H. Gannett, Civil Engineer

109154

Middlesex South Registry District  
RECEIVED FOR REGISTRATION  
FEB 18 1926  
11 O'CLOCK P.M.

*J.H. 1.00*

Copy of part of plan filed in  
LAND REGISTRATION OFFICE  
JULY 2, 1926  
Scale of this plan 120 feet to an inch  
C. B. Humphrey, Engineer for Court