



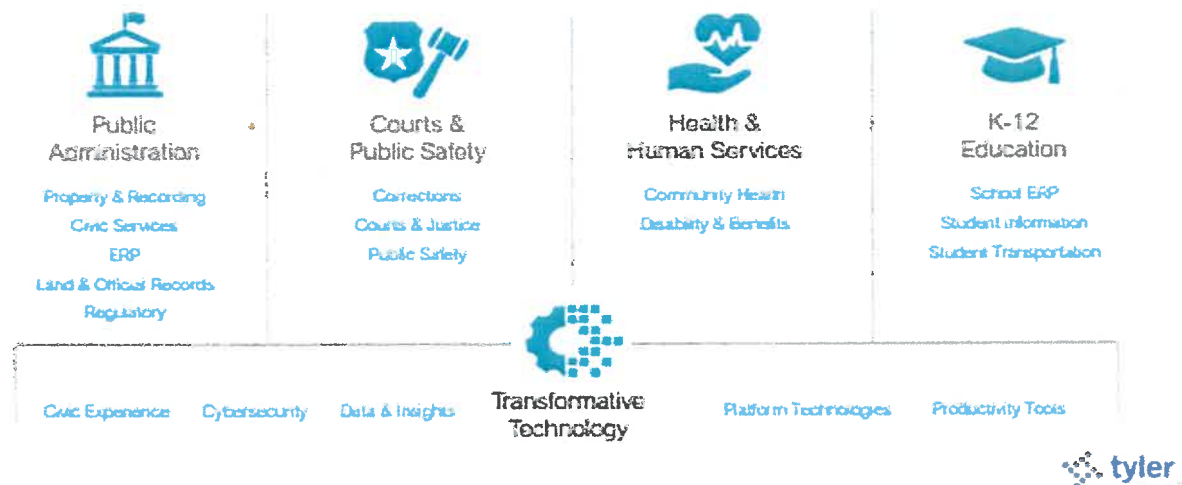
**TOWN OF HUDSON FINANCE DEPARTMENT  
78 MAIN STREET  
HUDSON MA 01749  
978-562-2427**

Tyler (Munis) is the largest software provider solely focused on the public sector and a trusted partner to local, state, and federal government & K-12 agencies.

Since 1997, Tyler has focused exclusively on providing software and services to federal, state, and local governments and K-12 schools.

Tyler's sole focus is providing governments with the tools they need to provide a better, safer, more transparent experience for their employees, their citizens, and everyone.

## Solutions working together to simplify complex operations



Enterprise ERP - Is a completely integrated ERP solution for government agencies, special districts, and schools of all sizes.

It is a modern, efficient and integrated application. As one solution for our operations, EERP is a modular system that can be implemented to meet our organizational needs today and for years to come.

## Connected solutions for your operations

**Financials**

- General Ledger
- Accounts Payable
- Budgeting
- Project & Grant Accounting
- Cost Management
- Business Activity Accounting
- Capital Assets
- AC/PF Statements Generator
- Contract Manager
- Employee Expenses
- Reimbursables
- Financials Search (budget base)

**Procurement**

- Purchasing
- Inventory
- RFQ Management
- Contract Management
- Vendor Access

**Human Capital Management**

- Recruiting
- HR Management
- Payroll
- Employee Access
- Risk Management
- Talent Management
- Time & Attendance
- Advanced Scheduling

**Revenue**

- Accounts Receivable
- General Property
- Business Licenses
- Permits & Code Enforcement
- General Billing
- Utility Billing CIS
- Cashiering
- Tyler Payments
- MA RI & PP Tax Billing
- MA NY Excise Billing
- MA Tax Title
- Permitting Boards
- Annual Licenses
- Cost Center
- Resident Access

**Civic Services**

- Employee Community Development
- Asset Maintenance
- Asset Performance
- Civic Access
- Parks and Rec
- Tyler Notify
- Tyler Incident Management
- MyCivic

**Data Insight**

- Analytics & Reporting
- Open Finance
- Capital Projects Explorer
- Custom Mapping
- Open Data & Content Engagement
- API Tools Bundles

**BREAKING DOWN SILOS AND STREAMLINING OPERATIONS**

**tyler**

Tyler has moved along with the industry on its own **cloud** development to provide the agility necessary to help you overcome new challenges quickly. This is part of our continued innovation.

The strategic collaboration with AWS allows Tyler to leverage the AWS Cloud in a way that helps clients deliver better services and experiences to their communities while improving security, reducing costs, and driving efficiencies.

With Tyler's EERP solution we are going to get the value we are looking for, an ERP solution with deep municipal functionality, multiple applications natively integrated and ability to access your work via mobile apps making things move. Reporting tools and intelligent data dashboards that are easy to use

### WITH RESIDENT ACCESS, OUR COMMUNITY CAN:

Resident Access gives business and community members self-service access to municipal services and information 24/7.

**EMPOWER YOUR COMMUNITY**

Conveniently and securely provide constituents with access to key information from anywhere, at any time.

**INCREASE STAFF EFFICIENCY**

Reduce time spent responding to routine requests for more information from residents

**INTEGRATIONS**

Payments, Accounts Receivable, Utility Billing CIS, Tax Billing and Collections, Business Licenses, and Permits and Inspections

Residents may view official records online, view bills and apply payments to real estate tax, utility bills, personal property, business licenses motor vehicles and more. Residents can conveniently access these services by validating certain account information or by creating a secure login

## **List of Services**

### **ENTERPRISE HUMAN CAPITAL MANAGEMENT**

#### **Recruiting, Human Resources, Payroll Processing Overview:**

- Employee Access
- Employee On-boarding
- Recruiting
- Position Control
- Benefits
- Personnel Actions
- Time and Attendance (Employee Access Time Sheets)
- Payroll Processing

### **TYLER ENTERPRISE ERP FINANCE**

- **Financial Management System Overview:**
- General Ledger, Budgeting, Project & Grant Management, Capital Assets
  
- **Procurement System Overview**
- Purchasing, Contract Mgmt., Accounts Payable, Vendor Access
  
- **Accounting**, Accounts Payable, Project Accounting, Purchase Orders, Budgeting, Capital Assets, Cash Management, Procurement (Vendor Access and Punch-Out), Project & Grant Accounting, Purchasing

### **ENTERPRISE ERP – FINANCIAL MANAGEMENT**

- System Navigation, Workflow, Reporting, Content Management, HUB, Central Screens, Executive Insights

## **ENTERPRISE ERP – REVENUES**

- Water and Sewer billing, meter reads
- MA RE, PP, MV Excise, Billing MLC's, Tax Title, Miscellaneous Billing
- Accounts Receivable,
- CAMA Bridge
- Central Property File
- General Billing,
- MA Tax Title
- Motor Vehicle Excise
- Tax Billing
- Utility Billing CIS including Graphing Agent
- Utility Billing Meter Interface

### **Cash Management, Accounts Receivable**

#### **Payment Processing:**

- Tyler Cashiering (Tyler Payments)
- Resident Access (Tyler Payments)