



## Eversource 115-kV Transmission Project Update

Greetings!

Eversource and its contractor BOND Civil & Utility Construction and their subcontractors (ET&L Construction, M-O-N Landscaping Inc., and Moosehead LLC) resumed construction on the 115-kilovolt (kV) Underground Transmission Line Project in Hudson and Sudbury. Eversource asks people to avoid walking along and crossing the inactive Massachusetts Bay Transportation Authority (MBTA) rail corridor. Construction is not expected to interrupt electric service.

In the inactive MBTA corridor, work proceeds with vegetation clearing, followed by erosion control installation and rail/tie removal. From there, grading of the limits of work happens. After these enabling activities are finished, crews excavate and install cable vaults and duct bank.

### Work Hours

Approved work hours are 7 a.m. to 6 p.m., Monday to Friday but crews are working from 7 a.m. to 3:30 p.m. Occasional work may extend beyond the approved hours, due to unforeseen circumstances, based on approval from municipal staff.

Below is an overview of the active and upcoming work zones in Hudson and Sudbury. [View the Project map](#) for additional details on the location of work crews.

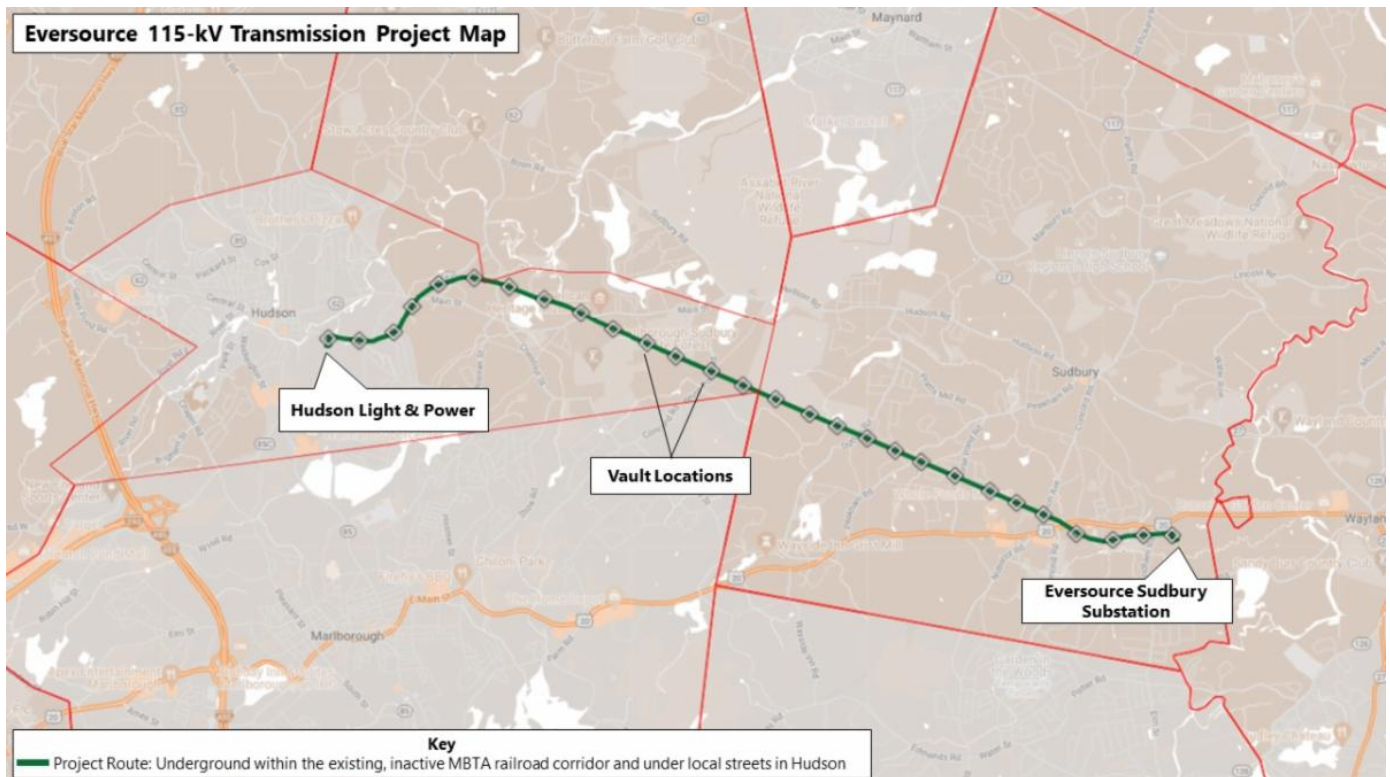
### Hudson

- **In the inactive MBTA rail corridor from Wilkins Street to Chestnut Street**, crews are completing the final grading of the limits of work .
- **Between Bridge 130 and Main Street in the corridor**, the installation of a cable vault (MH8) north of Main Street is underway. Another cable vault (MH9) will be placed starting next week, also north of Main Street (roughly 450'). Cable vaults, sometimes also named manholes (MH), are access points that are used for underground public utilities, allowing inspection and maintenance.
- **From Main Street to Parmenter Road in the corridor**, between MH10 and MH11, crews are excavating trenches, installing a protective tube called conduit then backfilling the trench. Conduit, sometimes called duct bank, will house the transmission line once installed.

- **Between Parmenter Road and White Pond Road in the corridor** from MH11 to MH12, crews are excavating trenches, installing conduit, then backfilling the trench.

## Sudbury

- **From the Town line to Dutton Road in the corridor** crews are in the process of rail/tie removal and this work will continue for the coming weeks.
- **Between Dutton Road to Peakham Road in the corridor**, erosion controls are being installed. After these activities are completed, crews will begin removing rails and ties.
- **From Peakham Road to Horse Pond Road**, vegetation removal is ongoing and will be completed next week. Afterward, the installation of erosion controls will start in this segment of the corridor.
- **From Horse Pond Road to Union Avenue**, vegetation removal will begin next week which will be followed by the installation of erosion controls.
- **Between the Sudbury Substation and Bridge 127**, rail/tie removal is ongoing which will be followed by the grading of the limits of work starting next week.
- **Off Boston Post Road at the Sudbury Substation**, excavation is happening to build foundations for new structures that will be installed on Eversource property inside the fence line.



## Typical Construction

Pictured is a view of the inactive MBTA corridor standing at Bridge 128 looking east toward Dutton Road in Sudbury.



## Stay Informed

Eversource is committed to being a good neighbor and doing any work with respect for you and your property. If you have questions, please contact us directly or click on one of the resources below to learn more about the project.

- Dial **1-833-836-0302** or email [ProjectInfoMa@eversource.com](mailto:ProjectInfoMa@eversource.com) with any questions or concerns.
- Visit the [website](#) for this project.
- View the [interactive project map](#).
- View information on [rail trail access](#) during construction.
- Visit the [Town of Sudbury](#) or [Town of Hudson](#) website to see additional resources.
- **Field outreach representatives** will be in touch with notices updating you on construction activities.

Did someone forward this email? If so, [sign up to receive future updates](#).

Si necesita que le traduzcan esta  
notificación, envíenos un correo  
electrónico a

ProjectinfoMa@eversource.com y  
escribe “[S-H]” en el asunto.

ProjectinfoMa@eversource.com  
“[S-H]”

ProjectinfoMa@eversource.com  
“[S-H]”

# EVERSOURCE

Address: 247 Station Drive  
Westwood, MA 02090  
Phone: 1-833-836-0302



Email Us