



Eversource 115-kV Transmission Project Update

Greetings!

Eversource and its contractor BOND Civil & Utility Construction and their subcontractors (ET&L Construction, M-O-N Landscaping Inc., and Moosehead LLC) resumed construction on the 115-kilovolt (kV) Underground Transmission Line Project in Hudson and Sudbury. Eversource asks people to avoid walking on and crossing the inactive Massachusetts Bay Transportation Authority (MBTA) rail corridor. Construction is not expected to interrupt electric service.

In the corridor, work starts with vegetation removal, followed by placing erosion controls and rail/tie removal. From there, grading of the limits of work happens. After these enabling activities are finished, crews excavate, install cable vaults and duct bank and then backfill trenches.

Work Hours

Approved work hours are 7 a.m. to 6 p.m., Monday to Friday but crews are working from 7 a.m. to 3:30 p.m. in Hudson and 7 p.m. to 5 p.m., for the next several weeks, in Sudbury. Occasional work may extend beyond the approved hours, due to unforeseen circumstances, based on approval from local officials.

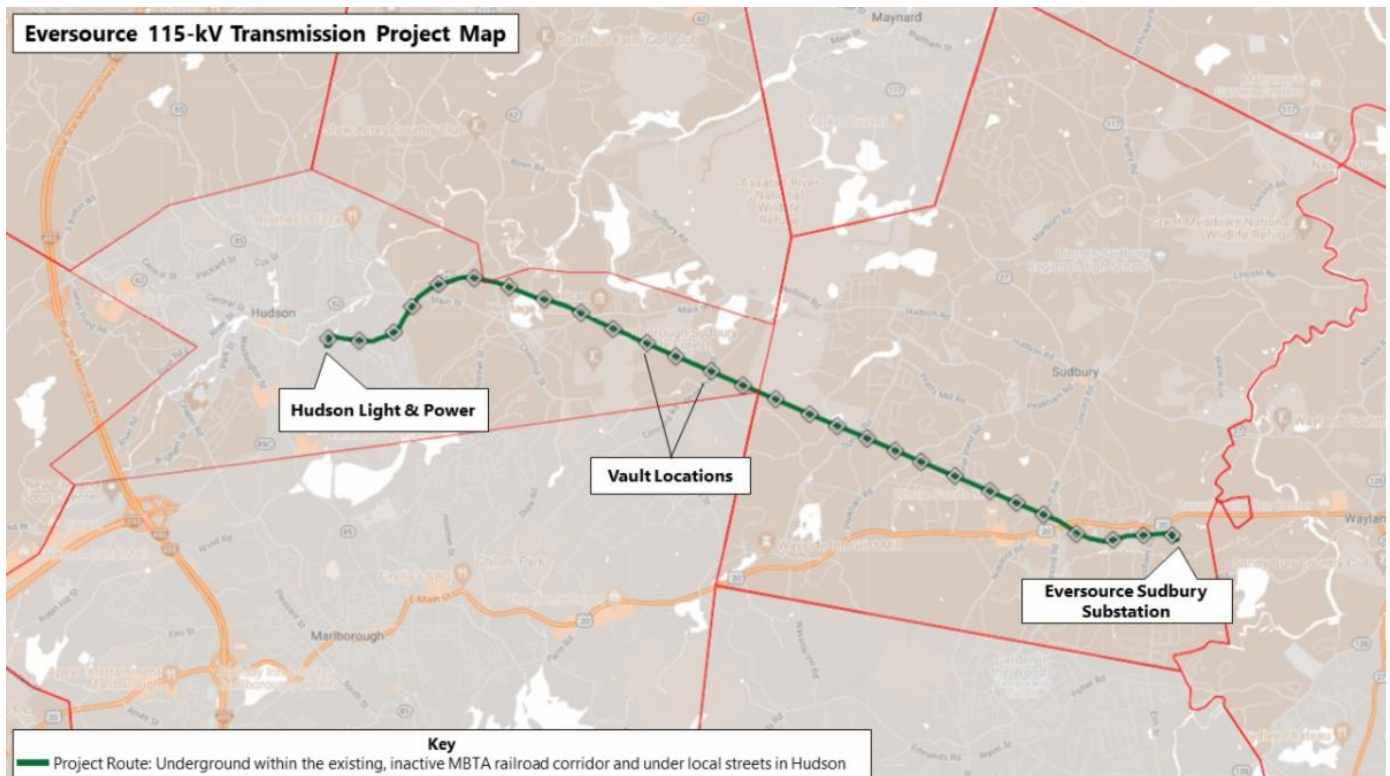
Below is an overview of the active and upcoming work zones in Hudson and Sudbury. [View the Project map](#) for additional details on the location of work crews.

Hudson

- In the inactive MBTA rail corridor from Wilkins Street to Bridge 130 crews are finishing the final grading of the limits of work and are completing the installation of a cable vault (MH7) east of Chestnut Street. Once installed, crews will begin conduit excavation from the cable vault to Bridge 130.
- Between Bridge 130 and Main Street, the installation of MH9 is complete.
- From Main Street to Parmenter Road, between MH9 and MH10, crews are excavating trenches, installing a protective tube called conduit and backfilling trenches. Starting soon, toward the end of next week, crews will begin similar activities between MH8 and MH9.

Sudbury

- From the Town line to Dutton Road in the corridor crews are in the process of completing rail/tie removal and have started to grade the limits of work.
- Between Dutton Road to Peakham Road, crews are removing rails and ties in this segment.
- From Peakham Road to Horse Pond Road, installation of erosion controls is complete in this segment of the corridor and rail/tie removal has begun.
- From Horse Pond Road to Union Avenue, vegetation removal is ongoing which will be followed by placing erosion controls to mark the limits of work. Rail/tie removal will begin once erosion controls are in place.
- Between Union Avenue and Boston Post Road, vegetation clearing in this segment of the corridor will start next week.
- Between Bridge 127 and the Sudbury Substation, grading of the limits of work is ongoing.
- At the Sudbury Substation, excavation is happening to build foundations for new structures that will be installed on Eversource property inside the fence line.



Typical Construction

Pictured is a crew installing duct bank in Hudson.



Stay Informed

Eversource is committed to being a good neighbor and doing any work with respect for you and your property. If you have questions, please contact us directly or click on one of the resources below to learn more about the project.

- Dial **1-833-836-0302** or email ProjectInfoMa@eversource.com with any questions or concerns.
- Visit the [website](#) for this project.
- View the [interactive project map](#).
- View information on [rail trail access](#) during construction.
- Visit the [Town of Sudbury](#) or [Town of Hudson](#) website to see additional resources.
- **Field outreach representatives** will be in touch with notices updating you on construction activities.

Did someone forward this email? If so, [sign up to receive future updates](#).

Si necesita que le traduzcan esta
notificación, envíenos un correo
electrónico a

ProjectinfoMa@eversource.com y
escribe “[S-H]” en el asunto.

ProjectinfoMa@eversource.com
“[S-H]”

ProjectinfoMa@eversource.com
“[S-H]”

EVERSOURCE

Address: 247 Station Drive
Westwood, MA 02090
Phone: 1-833-836-0302



Email Us