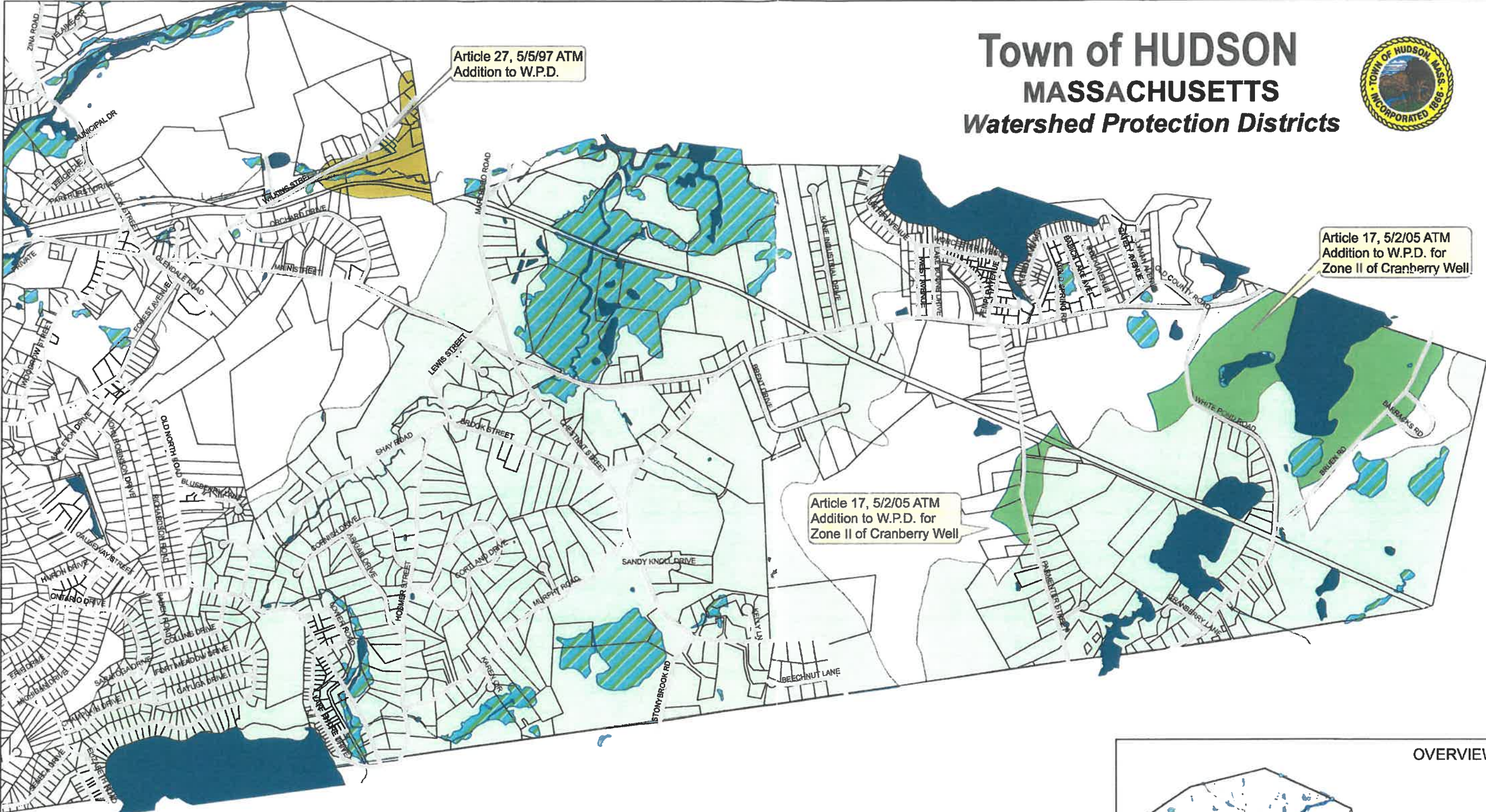


Town of HUDSON MASSACHUSETTS Watershed Protection Districts



Article 27, 5/5/97 ATM
Addition to W.P.D.

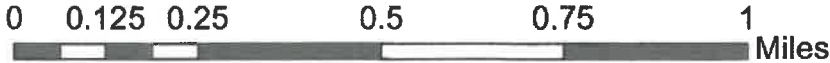
Article 17, 5/2/05 ATM
Addition to W.P.D. for
Zone II of Cranberry Well

Article 17, 5/2/05 ATM
Addition to W.P.D. for
Zone II of Cranberry Well

Map created by Hudson GIS
5/24/2006

Legend

- Lakes, Ponds and the Assabet River
- Parcels
- Wetland
- May 27, 1997 addition to Watershed Protection District
- Original Watershed Protection District
- May 2, 05 addition to the Watershed Protection District



Although every effort has been made to ensure that the spatial data on this map is of the highest accuracy and quality, it is, nevertheless, only appropriate for planning purposes. The information, as presented, is not intended for the legal interpretation of boundary or property lines, either municipal or private.

